



2018/2019 PRODUCT BROCHURE





DS makes sincere efforts to have the most competitive and the highest quality product available and it shows in the product they manufacture. Traditional craftsmanship defines each product from wood and coal furnaces to custom metal fabrication. With a goal of high efficiency and low maintenance, along with superior quality, DS products are built to last a lifetime. With four divisions, **Stove Manufacturing, Retail, Wholesale, and Custom/Production Fabrication**, DS strives for excellence in everything they produce.





Anthra-Max Fireplace Insert Models #DS-FP16

The DS Anthra-Max is an American-made, coal stove that puts efficiency and function ahead of price. Designed for the first floor or basement of a home, the DS Anthra-Max features an innovative smoke and gas re-burn system.

- Burns coal
- Easy liner attachment from inside of firebox
- Front loading baffle option
- Built from heavy plate steel
- Superior cast iron Shaker grates
- Cast iron airtight doors with knife edge seals
- Gravity fed coal hopper
- Dust free exterior Shaker handles
- Burn time 24-48 hours
- Removable firebrick retainers (bolt-on)
- SS secondary reburn baffle (removable)
- Adjustable air wash
- Bi-metal draft regulator (proven for 25+ years)
- Extra wide ashpan (for minimum ash spillage)
- Large 15" x 9" glass viewing window
- Made in the USA

SPECIFICATIONS

Fuel	Coal	Ash door size (WxH)	19" x 5.25"
Heating area (recommended)	1000-2000 sq. ft.	Ash pan size	2.75" high
Efficiency (Approx.)	82%	Top exhaust/size	6"
BTU (Approx.)	90,000	Coal hopper capacity (Approx.)	20 lbs.
Firebox size (WxDxH)	16" x 18" x 11"	Coal volume with hopper (Approx.)	80 lbs.
Firebox volume	1.8 cu. ft.	U.L. tested	Yes*
Firebox height to hopper	9.5"	Weight	480 lbs.
Firebox height	11"	Warranty	5-year limited
Hopper door size (WxD)	7.5" x 8.5"	Blower (Vari-speed)	Max CFM 220
Top door size (WxH)	18" x 11.75"		

* Safety-tested to UL1482 for coal use only.



Anthra-Max

The DS Anthra-Max is an American-made, coal stove that puts efficiency and function ahead of price. Designed for the first floor or basement of a home, the DS Anthra-Max features an innovative smoke and gas re-burn system.



Anthra-Max DSXV14

Anthra-Max DSXV15



Anthra-Max DSXV16



- Burns coal
- Heat exchanger tubes through firebox for natural circulation
- Built from heavy plate steel
- Superior cast iron Shaker grates
- Cast iron airtight doors with knife edge seals
- Gravity fed coal hopper
- Dust free exterior Shaker handles
- Burn time 24-48 hours
- Removable firebrick retainers (bolt-on)
- SS secondary reburn baffle (removable)
- Adjustable air wash
- Bi-metal draft regulator (proven for 25+ years)
- Extra wide ashpan (for minimum ash spillage)
- Large 15" x 9" glass viewing window
- Made in the USA

SPECIFICATIONS

Model #	#DSXV14	#DSXV15	#DSXV16
Fuel	Coal	Coal	Coal
Heating area (recommended)	500-1400 sq. ft.	1000-2000 sq. ft.	1500-2500 sq. ft.
Efficiency (Approx.)	82%	82%	82%
BTU (Approx.)	55,000	72,000	105,000
Firebox size (WxDxH)	16" x 12" x 14"	16" x 16" x 14"	16" x 20" x 14"
Firebox volume	1.55 cu. ft.	2.0 cu. ft.	2.60 cu. ft.
Hopper door size (WxD)	11.75" x 8.5"	11.75" x 8.5"	11.75" x 8.5"
Top door size (WxH)	18" x 11.75"	18" x 11.75"	18" x 11.75"
Ash door size (WxH)	19" x 5.25"	19" x 5.25"	19" x 5.25"
Rear exhaust/size	6"	6"	6"
Coal hopper capacity (Approx.)	40 lbs.	40 lbs.	40 lbs.
Coal volume with hopper (Approx.)	85 lbs.	110 lbs.	130 lbs.
U.L. tested	Yes*	Yes*	Yes*
Weight	490 lbs.	590 lbs.	650 lbs.
Warranty	5-year limited	5-year limited	5-year limited
Floor to center of rear exhaust	32.25"	32.25"	32.25"
Overall size with living room sheet metal (WxDxH)	28.5" x 22.5" x 39.5"	28.5" x 26.5" x 39.5"	28.5" x 31.5" x 39.5"
Overall size with basement sheet metal (WxDxH)	N/A	34.5" x 26.5" x 39.5"	34.5" x 31.5" x 39.5"
Optional basement or living room sheet metal	N/A - only sold with living room sheet metal	Yes	Yes
Optional top cover lid	Yes	Yes	Yes
Optional step top	No	Yes	Yes
Optional Blower (Vari-speed)	Max 125 CFM	Max 125 CFM	Max 125 CFM

* Safety-tested to UL1482 for coal use only.

DS Circulator Models 1300WH, 1400WH, 1500WH, 1600WH

The DS Circulator will burn for up to two days. Known for its slow burning, the coal hopper is gravity-fed, using no electricity. The DS Regulator controls drafts. With four different sizes available, you can heat individual rooms or your whole house.

- 4 sizes available
- Heats up to 500 to 2500 sq. ft. depending on model
- Heat exchanger tubes through firebox for natural circulation
- Cast iron airtight doors
- Bi-metal draft regulator
- Gravity fed coal hopper - holds 50 lbs
- Burn time 24-48 hours
- Made in the USA



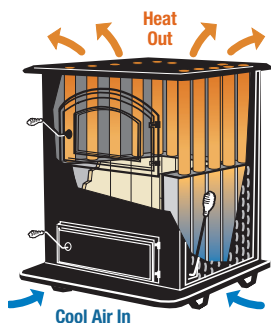
SPECIFICATIONS

Model #	#1300	#1400	#1500	#1600
Fuel	Coal	Coal	Coal	Coal
Heating area (recommended)	500-1200 sq. ft.	500-1600 sq. ft.	1000-2000 sq. ft.	1250-2500 sq. ft.
Efficiency	83%	83%	83%	83%
BTU approximately	50,000	80,000	96,000	125,000
Firebox size (WxD)	14" x 12"	14" x 16"	16" x 16"	16" x 20"
Firebox volume	2.0 cu. ft.	2.7 cu. ft.	3.2 cu. ft.	4.1 cu. ft.
Overall size (WxDxH)	26" x 20" x 36.75"	26" x 24.5" x 36.75"	28.5" x 26" x 36.75"	28.5" x 30.5" x 36.75"
Load door size (WxH)	16" x 10.5"	16" x 10.5"	16" x 10.5"	16" x 10.5"
Ash door size (WxH)	16.5" x 5.5"	16.5" x 5.5"	16.5" x 5.5"	16.5" x 5.5"
Top exhaust	N/A	N/A	N/A	N/A
Rear exhaust	6" - 30.25" center of flue	6" - 30.25" center of flue	6" - 30.25" center of flue	6" - 30.25" center of flue
Coal hopper capacity (Approx.)	50 lbs.	50 lbs.	50 lbs.	50 lbs.
Coal volume with hopper (Approx.)	75 lbs.	90 lbs.	110 lbs.	120 lbs.
U.L. tested	Yes*	Yes*	Yes*	Yes*
Weight	400 lbs.	475 lbs.	570 lbs.	648 lbs.
Warming shelf	Optional	Optional	Optional	Optional
Warranty	5-year limited	5-year limited	5-year limited	5-year limited

* Safety-tested to UL1482 for coal use only.

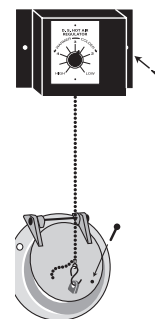
PATH OF HOT AIR THROUGH THE CIRCULATOR

Vertical tubes in the firebox increase the steel heating surface area by approximately 50%. This will create a natural hot air draft inside the tube and will draw cool air off the floor. The hot air produced by convection will constantly circulate through your house with no electrical blowers or fans, meaning even heat through your home.



THE DS REGULATOR

The DS Regulator is not electrical. It uses two different metals bonded together. The metals expand and contract based on temperature, directing the heat to where it is needed. Mounted directly on the hot surface of the stove, it governs the temperature by opening or closing the draft control. This draft control connects to a specially designed draft intake, through which air can enter to increase or decrease the temperature of the fire, depending on the heat radiated from the stove. The DS Regulator is equipped with a 5-position mechanical control dial.





Comfort Max Model #75

The Comfort Max is the perfect blend of style, efficiency and flexibility. It features a coal gas reburn system. Controlled by the DS Regulator, the secondary combustion system and heat exchanger make this unit 92% efficient.

- Heats up to 2000 sq. ft.
- Secondary smoke reburn system
- Bi-metal draft regulator
- Heat exchanger with tubes
- Cast iron airtight doors
- Optional blower
- Large glass viewing door
- Made in the USA

SPECIFICATIONS

Model #	#75
Fuel	Coal
Heating area (recommended)	1000-2000 sq. ft.
Efficiency	92%
BTU approximately	70,000
Firebox size (WxD)	19" x 12"
Firebox volume	2.3 cu. ft.
Firebox height	17.5"
Overall size (WxDxH)	26.25" x 24" x 39"
Load door size (WxH)	18" x 12"
Ash door size (WxH)	19" x 5.5"
Top exhaust	6" Standard
Rear exhaust	N/A
Blower	Optional 160 CFM
U.L. tested	Yes*
Weight	595 lbs.
Living room jacket	Standard
Warming shelf	N/A
Warranty	5-year limited

* Safety-tested to UL1482 for coal use only.



Gravity Flow Coal Furnace

CoalMaster Model #2100 WH

The CoalMaster can heat your entire home using no electricity. The gravity-fed hopper provides up to two days of continuous heat. This basement model features a window for monitoring. Works great in greenhouses and shops, too.

- Heats up to 3000 sq. ft.
- 24-48 hour burn time
- Bi-metal draft regulator
- Removable coal hopper
- Made in the USA



SPECIFICATIONS

Fuel	Coal	Top exhaust	N/A
Heating area (recommended)	1500-3000 sq. ft.	Rear exhaust	33.25" center of flue
Efficiency	80%	Blower CFM	N/A
BTU approximately	130,000	Coal hopper capacity (Approx.)	60 lbs.
Firebox size (WxD)	16" x 20"	Coal volume with hopper (Approx.)	135 lbs.
Firebox volume	4.0 cu. ft.	U.L. tested	Yes*
Overall size (WxDxH)	27.75" x 27" x 40"	Weight	540 lbs.
Load door size (WxH)	16" x 10.5"	Sheet metal jacket	Standard
Ash door size (WxH)	16.5" x 5.5"	Warranty	5-year limited

* Safety-tested to UL1482 for coal use only.

Gravity Flow Coal Furnaces

Econo Riteburn Model #1624

The Econo Riteburn provides plenty of heat at a reasonable price. It is ideal for shops and greenhouses. Controlled by our special DS Regulator, the Econo Riteburn is easy to operate and requires low maintenance.

- Heats up to 2600 sq. ft.
- Bi-metal draft regulator
- Cast iron airtight doors
- Optional sheet metal jacket
- Left or right hand door opening available
- Made in the USA

SPECIFICATIONS

Fuel	Coal	Ash door size (WxH)	16.5" x 5.5"
Heating area (recommended)	1500-2600 sq. ft.	Top exhaust	7" Left or Right
Efficiency	71.5%	Rear exhaust	N/A
BTU approximately	140,000	Blower CFM	N/A
Firebox size (WxD)	16" x 24"	U.L. tested	Yes*
Firebox volume	4.9 cu. ft.	Weight	415 lbs.
Overall size (WxDxH)	29.5" x 30" x 36"	Warming shelf	Optional
Load door size (WxH)	11" x 12"	Warranty	5-year limited

* Safety-tested to UL1482 for coal use only.



HeatRight Model #120

The HeatRight 120 can heat your whole house, shop, or just about any space. The HeatRight is a mid-range quality product, designed for durability, low-cost, simple operation.

- Heats up to 2600 sq. ft.
- Secondary combustion system
- Bi-metal draft regulator
- Cast iron airtight doors
- Available with red or black sheet metal
- Made in the USA

SPECIFICATIONS

Fuel	Coal	Top exhaust	6"
Heating area (recommended)	2500 sq. ft.	Rear exhaust	N/A
Efficiency	80%	Blower CFM	N/A
BTU approximately	125,000	U.L. tested	Yes*
Firebox size (WxD)	16" x 22"	Weight	440 lbs.
Firebox volume	4.0 cu. ft.	Sheet metal jacket	Standard
Overall size (WxDxH)	25" x 29.75" x 36.5"	Warming shelf	N/A
Load door size (WxH)	11" x 12"	Warranty	5-year limited
Ash door size (WxH)	16.5" x 5.5"		

* Safety-tested to UL1482 for coal use only.

EnergyMax Models #110 and 160



EnergyMax #110

Our best seller, the EnergyMax 110 is designed for high efficiency and a clean burn. It features a glass view door and burns coal. (This EnergyMax is controlled by the DS regulator and burns with 85% efficiency.) Available in red or black sheet metal.

- #110 heats up to 2400 sq. ft.
- #160 heats up to 3500 sq. ft.
- Reburn system that creates “EXTREME” clean burn for coal
- Bi-metal draft regulator
- Heat exchanger tubes through furnace that create a convectional circulation
- Secondary combustion system
- Sheet metal jacket that directs heat upwards
- Superior cast iron Shaker grates
- Cast iron airtight doors
- Ceramic glass in door with *AirWash System*
- Made in the USA



EnergyMax #160

The EnergyMax 160 is a basement model designed to heat your entire home by convection. It was fashioned for the basement but will work well for use in a shop or a greenhouse. Using 2 ½” Firebrick for the firebox liner, this monster will serve for a long time. (This EnergyMax is controlled by the DS regulator and burns with 85% efficiency.)

SPECIFICATIONS

Model #	#110	#160
Fuel	Coal	Coal
Heating area (recommended)	1200-2400 sq. ft.	2000-3500 sq. ft.
Efficiency	85%	86%
BTU approximately	110,000	160,000
Firebox size (WxD)	14" x 22"	16" x 24"
Firebox volume	3.6 cu. ft.	4.5 cu. ft.
Overall size (WxDxH)	33.5" x 33.25" x 37.25"	36" x 36.5" x 41"
Load door size (WxH)	13.75" x 12"	13.75" x 12"
Ash door size (WxH)	16.5" x 5.5"	16.5" x 5.5"
Top exhaust	6"	8"
Rear exhaust	N/A	N/A
Blower	N/A	N/A
U.L. tested	Yes*	Yes*
Weight	750 lbs.	1050 lbs.
Sheet metal jacket	Standard	Standard
Warming Shelf	N/A	N/A
Warranty	5-year limited	5-year limited

* Safety-tested to UL1482 for coal use only.

Forced Air Coal Furnaces

Stoker Furnace

Model #DS SF250

The Stoker Furnace is a twin to the Stoker Boiler that we manufacture. The difference is “hot air” vs. “hot water”. It is an auger-fed stoker with a pot burner, designed to burn rice coal. It is designed to feed the coal from an optional 500 lb. hopper or coal bin. This unit is constructed with a “built to last” attitude.

- Burns rice coal
- Auger-fed round fire pot with complete breakdown “floating” design
- RH or LH feed option
- Outfire sensor
- Variable speed combustion blower and auger
- Special tubes through the firebox for maximum heat exchange
- Optional 500 lb. hopper
- Made in the USA

New

SPECIFICATIONS

Fuel	Rice Coal
Heating area (recommended)	1000-5000 sq. ft.
Greenhouse heating area	500-2500 sq. ft.
BTU approximately	50,000-200,000
Overall size (WxDxH)	30.75" x 36" x 51"
Plenum inlet and outlet	18" x 18"
Blower CFM	3-Speed 1100, 1350, 1600
Weight	850 lbs.
Warranty	5-year limited 1-year on electrical



Ecomiser Model #200-10

The Ecomiser was designed to be economical. This U.L. listed coal burning furnace is controlled with a bi-metal regulator, combining with secondary combustion for maximum efficiency, using less fuel.

- Heats up to 2500 sq. ft.
- Preset secondary combustion
- Bi-metal draft regulator
- Cast iron airtight doors
- Secondary combustion system
- Adjustable snap disc for distribution blower
- Standard with filter box
- Made in the USA

SPECIFICATIONS

Fuel	Coal	Top exhaust	N/A
Heating area (recommended)	1000-2500 sq. ft.	Rear exhaust	8"
Efficiency	76.4%	Floor to outlet	44" center
BTU approximately	120,000	Plenum inlet and outlet	18" x 18"
Firebox size (WxD)	16" x 24"	Blower CFM	965
Firebox volume	5.5 cu. ft.	U.L. tested	Yes*
Overall size (WxDxH)	24" x 29.5" x 49.75"	Weight	500 lbs.
Depth including filter box	50.5"	Sheet metal jacket	Standard
Load door size (WxH)	14" x 14.5"	Warranty	5-year limited 1-year electrical
Ash door size (WxH)	16.5" x 5.5"		



* Safety-tested to UL1482 for coal use only.

Forced Air Coal Furnaces

Kozy-King Models #DS100-14, DS300-09, DS400-09

The Kozy-King is thermostat controlled for even temperature. The furnace comes with a 3-speed blower and a safety feature to prevent overheating. The Kozy-King will heat your whole house, shop or greenhouse.

- #100-14 heats up to 2000 sq. ft.
- #300-09 heats up to 3000 sq. ft.
- #400-09 heats up to 4000 sq. ft.
- Cast iron airtight doors
- 3-speed blower
- Thermostat controlled
- Safety control with fan limit switch
- Secondary combustion system
- Special tubes through fire box for maximum heat circulation
- Forced draft
- Insulated cabinet
- 80/20 combustion bypass
- 85.1% efficiency rating
- Domestic water option
- Made in the USA



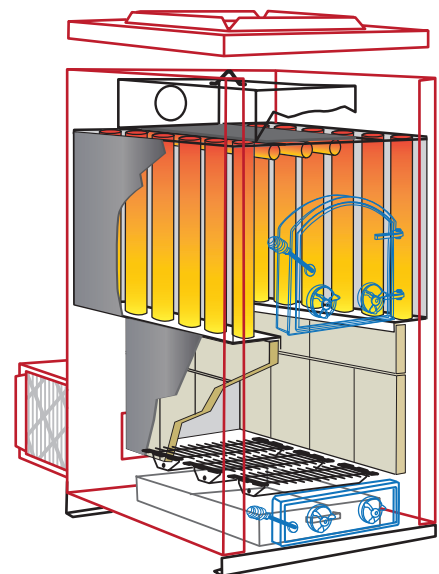
SPECIFICATIONS

Model #	#100-14	#300-09	#400-09
Fuel	Coal	Coal	Coal
Heating area (recommended)	1200-2000 sq. ft.	2000-3000 sq. ft.	2500-4000 sq. ft.
Efficiency	85.1%	85.1%	85.1%
BTU approximately	90,000	140,000	205,000
Firebox size (WxD)	14" x 20"	16" x 22"	16" x 29"
Firebox volume	3.5 cu. ft.	6.2 cu. ft.	8 cu. ft.
Overall size (WxDxH)	27.5" x 27" x 47.75"	28.5" x 29" x 53"	28.5" x 36" x 53"
Depth including filter box	47"	49"	56"
Load door size (WxH)	12" x 11"	14" x 14.5"	14" x 14.5"
Ash door size (WxH)	16.5" x 5.5"	16.5" x 5.5"	16.5" x 5.5"
Top exhaust	N/A	N/A	N/A
Rear exhaust	6"	8"	8"
Floor to outlet	42.5" center of flue	47" center of flue	47" center of flue
Plenum inlet and outlet	18" x 18"	18" x 18"	18" x 18"
Blower CFM	3-Speed 1100, 1350, 1650	3-Speed 1100, 1350, 1650	3-Speed 1100, 1350, 1650
U.L. tested	Yes*	Yes*	Yes*
Weight	700 lbs.	730 lbs.	820 lbs.
Insulated jacket	Standard	Standard	Standard
Warranty	5-year limited 1-year electrical	5-year limited 1-year electrical	5-year limited 1-year electrical

* Safety-tested to UL1482 for coal use only.

THE DS HOT AIR CIRCULATOR SYSTEM

Vertical tubes in the firebox increase the steel heating surface area by approximately 50%. This will create a natural hot air draft inside the tube and will draw cool air off the floor. The hot air produced by convection will constantly circulate through your house with no electrical blowers or fans, meaning even heat through your home.





Gravity Flow Wood & Coal Greenhouse Furnace



GH Blast Model #450

Our greenhouse furnace requires no electricity to heat the entire area. Each unit has a powerful heat exchanger combined with the DS Circulator system for excellent gravity circulation!

- Specializing in shop or greenhouse applications
- Natural or forced draft options
- Heat exchanger to maximize efficiency
- All constructed from heavy plate steel
- Five-year limited warranty
- Made in the USA



SPECIFICATIONS

Fuel	Wood & Coal	Overall size with outside fire door	40.5" x 81" x 78"
Heating area (recommended)	up to 10,000 sq. ft.	Outside door framing opening (WxH)	40.75" x 75.5"
Heating area for a greenhouse (recommended)	up to 4500 sq. ft.	Load door size (WxH)	18" x 18"
Efficiency	Approx. 80%	Ash door size (WxH)	16.5" x 8.5"
BTU approximately	450,000	Top exhaust	10" Standard
Firebox size (W x D)	24" x 52"	Rear exhaust	N/A
Firebox volume	20 cu. ft.	U.L. tested	No
Log size	48"	Weight	2425 lbs.
Overall size (WxDxH)	40.5" x 62.5" x 78"	Insulated outside fire door	Optional
		Warranty	5-year limited



New

Gas Boiler

Gas Boiler **Model #DSGB-150**

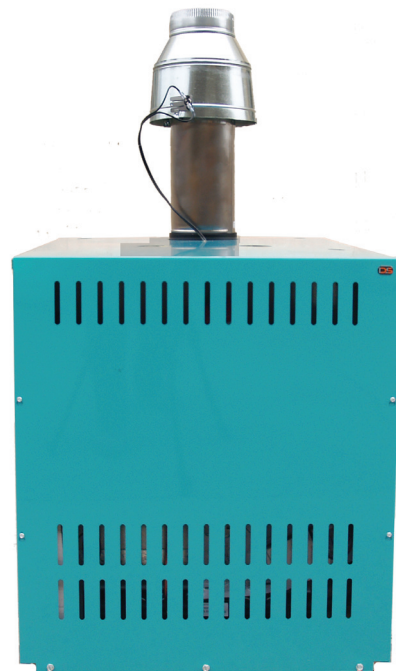
- Easy access panel to access controls
- Robertshaw valve 1/2 to 3/4
- 304 Stainless steel baffles
- Over 5,000 SQ inches of heat exchange surface for optimal efficiency
- Completely insulated boiler
- Stainless steel burner tubes

SPECIFICATIONS

Fuel	LP or NG
Heating area	1500-4000 sq. ft.
Efficiency	83.8%
BTU Approx.	150,000
Gas valve hookup size	1/2" NPT
Overall size (WxDxH)	27" x 33" x 32.5"
Water inlet/outlet	2"
Top exhaust	6"
Rear exhaust	N/A
Water capacity	30 gallons
Weight	650 lbs.
Warranty	5-year limited 1-year controls

GAS BOILER PRICING INCLUDES:

- NG or LP Burner
- 30# Safety Valve
- Boiler Drain
- Aquastat
- Temperature Pressure Gauge
- Gas Valve and Controls
- Safety Shutoff Sensors



Aqua-Stoke Models #SB200

DS is a family owned business that was established in 1978. DS has over 30 years of experience with designing and manufacturing solid fuel stoves and boilers. In 2015 DS started the research and development of the Aqua-Stoke. It is an auger fed stoker with a pot burner, designed to burn rice coal. It is designed to feed the coal from an optional 500 lb. hopper or coal bin. This unit is constructed with a “built to last” attitude.

- Burns rice coal
- Built from heavy plate steel
- Cast iron airtight glass fire door with knife edge seal
- Optional 500 lb. hopper
- Auger fed round fire pot with complete breakdown “floating” design
- R/h or l/h feed option
- Outfire auger and blower shutoff with light indicator
- Large 10” high ashpan for longer burn time and optimal spillage control
- 8” rear exhaust
- Variable speed blower and auger
- Optional 4 or 5 gallon-per-min domestic hot water coil
- Heavy duty heat exchanger
- High-efficiency motors for a total power consumption of 1.7 amps
- Optional insulated jacket
- Multiple easy access panels for maintenance and cleaning
- Made in the USA



STOKER BOILER PRICING INCLUDES:

- Carbon Monoxide Detector
- Boiler
- Base
- Pot
- First Pot Auger
- Electrical Controls
- 30# Safety Valve
- Temperature Pressure Gauge
- Boiler Drain

SPECIFICATIONS

Model Number	#SB200
Fuel	Rice Coal
Heating area	1000-5000 sq. ft.
Greenhouse heating area	500-2500 sq. ft.
Efficiency	82.8%
BTU (Approx.)	50,000-230,000
Firebox size (WxDxH)	20" x 18" x 18.25"
Burn pot size	10"
Overall size (WxDxH)	27" x 40" x 53"
Total width with blower and control box	43"
Total width with 500 lb. hopper connected	77.5"
Total size of hopper (WxDxH)	26" x 26" x 48"
Top door size (WxH)	15.25" x 13.25"
Ash door size (WxH)	24" x 15.5"
Bottom rear exhaust	8"
Water capacity	50 gallons
Inlet/outlet	2"
U.L. tested	Yes
Weight total	1175 lbs. (Base-176 lbs., Boiler-775 lbs., Components-224 lbs.)
Insulated jacket	Optional
Warranty	5-year limited 1-year on electrical, bushings and wearplates



Coal Boilers



DS 3200 with sheet metal insulation kit



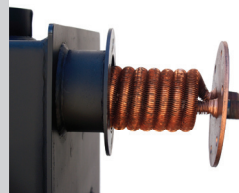
Aqua-Gem Models #1100, 3200, 4200

The Aqua-Gem's hydronic system requires no electricity to heat water for floor heating, baseboard, freestanding radiators, heat pumps, or domestic water. It works well with new or existing oil or electric boilers. Each unit is pressure tested to 120 PSI and has a powerful heat exchanger for maximum efficiency.

- Safety tested to U.L. standards
- Secondary combustion system
- Optional 4 or 5-gallon per minute domestic water coil
- Optional forced draft
- Optional insulation/sheet metal cabinet
- Made in the USA

SPECIFICATIONS

Model #	#1100	#3200	#4200
Fuel	Coal	Coal	Coal
Heating area (recommended)	1000-2400 sq. ft.	2000-3500 sq. ft.	3000-5000 sq. ft.
Efficiency	78%	78%	78%
BTU approximately	100,000	160,000	230,000
Firebox size (WxDxH)	16.5" x 19" x 20"	19" x 24" x 25"	19" x 30" x 25"
Firebox volume	3.6 cu. ft.	7.0 cu. ft.	8.2 cu. ft.
Overall size (WxDxH)	23.5" x 25" x 49.5"	26" x 30" x 53.5"	26" x 36" x 53.5"
Load door size (WxH)	11" x 12"	14" x 14.5"	14" x 14.5"
Ash door size (WxH)	16.5" x 9"	16.5" x 9"	16.5" x 9"
Top exhaust	6" Standard	7" Standard	8" Standard
Rear exhaust	Optional 6"-39" center of flue	Optional 7"-42.5" center of flue	Optional 8"-42.5" center of flue
4- or 5-GPM Domestic water coil	Yes	Yes	Yes
Water capacity	27 Gallons	40 Gallons	45 Gallons
Inlet/outlet	4 - 1.25"	4 - 2"	4 - 2"
U.L. tested	Yes*	Yes*	Yes*
Weight	800 lbs.	1050 lbs.	1250 lbs.
Insulated jacket	Optional	Optional	Optional
Warranty	5-year limited 1-year controls	5-year limited 1-year controls	5-year limited 1-year controls



This 4 or 5-gallon-per-minute domestic water coil can heat your hot water or work in conjunction with your existing domestic water system. You can save up to \$100.00 per month over LP gas, electric or heating fuel.

Coal Boiler **Model #9158**

- Tank built from 1/4" plate steel
- Top load
- Rugged multi-purpose boiler
- Controlled with Samson regulator

SPECIFICATIONS

Fuel	Coal	Ash door size (WxH)	16.5" x 5.5"
Heating area (recommended)	1000-2400 sq. ft.	Top exhaust	6"
Efficiency	Approximately 78%	Rear exhaust	N/A
BTU approximately	105,000	Water capacity	32 gallons
Firebox size (WxD)	18" diameter x 24"H	U.L. tested	No
Firebox volume	5.0 cu. ft.	Weight	445 lbs.
Overall size (WxDxH)	29.75" x 32" x 41.5"	Warranty	5-year limited
Load door size (WxH)	9.5" x 6.5"		



Coal & Wood Boilers

Power Boilers **Models #5000, 6000, 7000**

Our hydronic units require no electricity to heat water for floor heating, baseboard, freestanding radiators, heat pumps, or domestic water systems. Constructed from 1/4" steel, these boilers easily maintain water temperature. Each unit is pressure tested to 120 PSI and has a powerful heat exchanger for maximum efficiency.

SPECIFICATIONS

Model #	#5000	#6000	#7000
Fuel	Wood* & Coal	Wood* & Coal	Wood* & Coal
Heating area (recommended)	up to 7500 sq. ft.	up to 10,000 sq. ft.	up to 12,000 sq. ft.
Heating area for a greenhouse (recommended)	up to 3800 sq. ft.	up to 4500 sq. ft.	up to 6000 sq. ft.
Efficiency	Approx. 80%	Approx. 80%	Approx. 80%
BTU approximately	380,000	450,000	520,000
Firebox size (W x D)	24" x 39"	24" x 45.5"	24" x 52"
Firebox volume	13 cu. ft.	15.2 cu. ft.	17.3 cu. ft.
Log size	36"	42"	48"
Overall size (WxDxH)	33.5" x 46" x 62"	33.5" x 53" x 62"	33.5" x 59" x 72"
Load door size (WxH)	16" x 18"	16" x 18"	18" x 18"
Ash door size (WxH)	16.5" x 8.5"	16.5" x 8.5"	16.5" x 8.5"
Top exhaust	8" Standard	8" Standard	10" Standard
Rear exhaust	Optional 8" -50.75" center of flue	Optional 8" -50.75" center of flue	Optional 10" -56.75" center of flue
Domestic water	Optional 4 or 5 GPM coil	Optional 4 or 5 GPM coil	Optional 4 or 5 GPM coil
Water capacity	125 Gallons	136 Gallons	175 Gallons
U.L. tested	No	No	No
Weight	1950 lbs.	2100 lbs.	2500 lbs.
Insulated sheet metal jacket	Optional	Optional	Optional
Warranty	5-year limited	5-year limited	5-year limited

* wood burning for non residential use only.



- Specializing in greenhouse applications
- Natural or forced draft options
- Heat exchanger to maximize efficiency
- All constructed from 1/4" plate steel
- Optional 4 or 5-gallon-per-minute domestic water coil
- Five-year limited warranty
- Made in the USA



Coal Water Heater

#151 Bucket-a-day

- Designed to heat domestic water or smaller homes
- Requires only 30 lbs. of coal per day
- Tank built from 304 stainless steel
- Detachable top and bottom
- Draft regulated with a Samson control
- Requires a minimum 40 gallon storage tank when heating domestic water



SPECIFICATIONS

Fuel	Coal	Ash door size (WxH)	16.5" x 5.5"
Heating area (recommended)	Domestic water or 250-1200 sq. ft.	Top exhaust	Oval 6"
Efficiency	Approximately 78%	Rear exhaust	N/A
BTU approximately	55,000	Water capacity	8 gallons
Firebox size (WxD)	13" diameter x 16"H	U.L. tested	N/A
Firebox volume	2.0 cu. ft.	Weight	240 lbs.
Overall size (WxDxH)	24" x 24" x 30"	Warranty	1-year limited
Load door size (WxH)	9" x 6"		

Wood Water Heater

#24 W Wood Water Heater

- Tank built from 304 stainless steel
- Designed to heat domestic water
- Draft regulated manually or with Samson control
- Requires a minimum 40 gallon storage tank
- Requires 75# safety valve (included)



SPECIFICATIONS

Fuel	Wood	Load door size (WxH)	8.5" x 8.5"
Heating area (recommended)	Domestic water	Ash door size (WxH)	N/A
Efficiency	N/A	Top exhaust	N/A
BTU approximately	50,000	Rear exhaust	6" center of flue
Firebox size (WxD)	14" diameter x 24"D	Water capacity	10 gallons
Firebox volume	2.0 cu. ft.	U.L. tested	N/A
Log size	22"	Weight	140 lbs.
Overall size (WxDxH)	19" x 24" x 36"	Warranty	1-year limited

Coal Fired Hot Water Heater (for veal calf barns)

#1530 Coal Veal Boiler

- Designed to heat water for veal calves
- Feeds up to 300 calves
- Tank built from 304 stainless steel
- Designed to work with a 500+ gallon tank
- 2-3" clean out ports at bottom of tank
- This unit can also be used for other types of heating



SPECIFICATIONS

Fuel	Coal	Load door size (WxH)	9.5" x 6.5"
Heating area (recommended)	500-1800 sq. ft. or 500 gallons of water	Ash door size (WxH)	16.5" x 5.5"
Efficiency	Approximately 78%	Top exhaust	6" oval
BTU approximately	73,000	Rear exhaust	N/A
Firebox size (WxD)	15" diameter x 24"H	Water capacity	32 gallons
Firebox volume	4.0 cu. ft.	U.L. tested	N/A
Log size	N/A	Weight	360 lbs.
Overall size (WxDxH)	24" x 24" x 35"	Warranty	1-year limited

Wood Fired Hot Water Heater

(for veal calf barns)



#200 WVB Boiler

- Designed to heat water for veal calves
- Feeds up to 100 calves
- Tank built from 304 stainless steel with lid
- Float valve on top optional (1" NPT)
- Drain is 43" from floor optional side 1.5" NPT.
- Exhaust and fittings can be placed on either side
- Firebrick lined firebox

#300 WVB Boiler

- Designed to heat water for veal calves
- Feeds up to 250 calves
- Tank built from 304 stainless steel with lid
- Float valve on top optional (1" NPT)
- Drain is 43" from floor optional side 1.5" NPT.
- Exhaust and fittings can be placed on either side
- Firebrick lined firebox

SPECIFICATIONS

Model #	#200 WVB	#300 WVB
Fuel	Wood	Wood
Heating area (recommended)	Veal boiler	Veal boiler
Efficiency	N/A	N/A
BTU approximately	300,000	400,000
Firebox size (WxD)	30" x 46"	40" x 52"
Firebox volume	16.0 cu. ft.	24.0 cu. ft.
Log size	42"	48"
Overall size (WxDxH)	30" x 46" x 74"	40" x 52" x 84"
Load door size (WxH)	14" x 14.5"	14" x 14.5"
Ash door size (WxH)	N/A	N/A
Top exhaust	8"	8"
Rear exhaust	Available	Available
Water capacity	200 gallons	300 gallons
U.L. tested	N/A	N/A
Weight	1200 lbs.	1350 lbs.
Warranty	1-year limited	1-year limited



Wood or Gas Fired Canners



#2530 Round Canner

- 25" diameter x 34" high
- Stainless steel construction with wooden jar rack
- Holds approximately 30 quart jars
- Capacity 30 gallons
- Portable - for outdoor use only
- 6" standard flue with stovepipe holder
- Lockable drain
- Designed to burn wood or LP gas burner can be installed

#2540 Round Canner

- 25" diameter x 36" high
- Stainless steel construction with wooden jar rack
- Holds approximately 30 quart jars per layer
- Capacity 40 gallons
- Portable - for outdoor use only
- 6" standard flue with stovepipe holder
- Lockable drain
- Designed to burn wood or LP gas burner can be installed



#2437 Square Canner

- 24"W x 24"D x 34"H
- Stainless steel construction with wooden jar rack
- Holds approximately 36 quart jars per layer
- Capacity 37 gallons
- Portable - for outdoor use only
- 6" standard flue with stove pipe holder
- Lockable ball valve
- Designed to burn wood or LP gas burner can be installed



#2738 Deluxe Canner

- 27" square x 34" high
- Capacity 37 gallons
- Double wall construction heats water 50% faster than the #2530, #2540, #2437
- 6" flue
- Has two hinged lids
- Firebrick lined firebox
- Wooden jar rack included



#70LPG Burner

- 10" cast iron low pressure LP burner
- Adjustable, max 70,000 BTUs
- Pilot with safety shut-off
- Designed to fit #2530, 2540, 2738 canners



Stove Top Canners



#25 Stove Top Canner
(Shown above with #PRO60X 2-Burner Stove*)

#25 Stove Top Canner
(Shown on left with #PRO60X 2-Burner Stove and on right with #EX60LW 2-Burner Stove)

- 32"W x 13.5"D x 13"H
- Capacity 23 gallons
- All stainless steel
- Holds 25 quart jars
- Designed to fit on a gas burner system
- Has 1/2" NPT at bottom for drain



#25 Stove Top Canner
(Shown above with #EX60LW 2-Burner Stove*)



#15 Stove Top Canner
(Shown left with #BS40C Ranger II Table Top Stove and right on a gas cook stove)


- 20.5"W x 11.5"D x 13"H
- Two burner canner
- Capacity 13 gallons
- All stainless steel
- Holds 15 quart jars
- Designed to fit a gas cook stove or tabletop stove



* Two burner stoves are sold separately and are not manufactured by DS



Which DS Product is Right for You?

	First Floor	Basement	Whole House	Forced Hot Air	Coal	Wood	Gas	Freestanding Unit	Hot Water Heating	Green House/Shop
Anthra-Max	•	•	•		•			•		
Anthra-Max Fireplace Insert	•	•	•		•					
DS Circulator	•	•	•		•			•		
EnergyMax #110	•	•	•		•			•		
EnergyMax #160		•	•		•			•		•
Kozy-King		•	•	•	•					•
Ecomiser		•	•	•	•					•
HeatRight		•	•		•			•		
Comfort Max	•	•	•		•			•		
Econo Riteburn		•	•		•			•		•
CoalMaster		•	•		•			•		•
Power Boilers # 5000, 6000, 7000		•	•		•	•			•	•
Aqua-Gem Boilers #1100, 3200, 4200		•	•		•				•	•
Aqua-Stoke		•	•		•				•	•
GH Blast #450					•	•		•		•
Stoker Furnace		•	•	•	•					•
Gas Boiler		•	•				•		•	•

**See individual product brochures for U.L. testing information.*



238 Old Leacock Road
Gordonville, PA 17529
717-768-3853

Authorized Dealer